



Methane to Markets

ASG Update

***Oil and Gas Subcommittee Meeting
September 2005, Tomsk, Russia***

*Erin Birgfeld
Head, Administrative Support Group
Methane to Markets Partnership*



Methane to Markets

Summary

- Partnership Background
- Partnership Update
 - New Partners
 - Project Network Members
 - Outreach and Communications / Web
- 2nd Annual Methane to Markets Meeting
 - 2-4 November Buenos Aires, Argentina

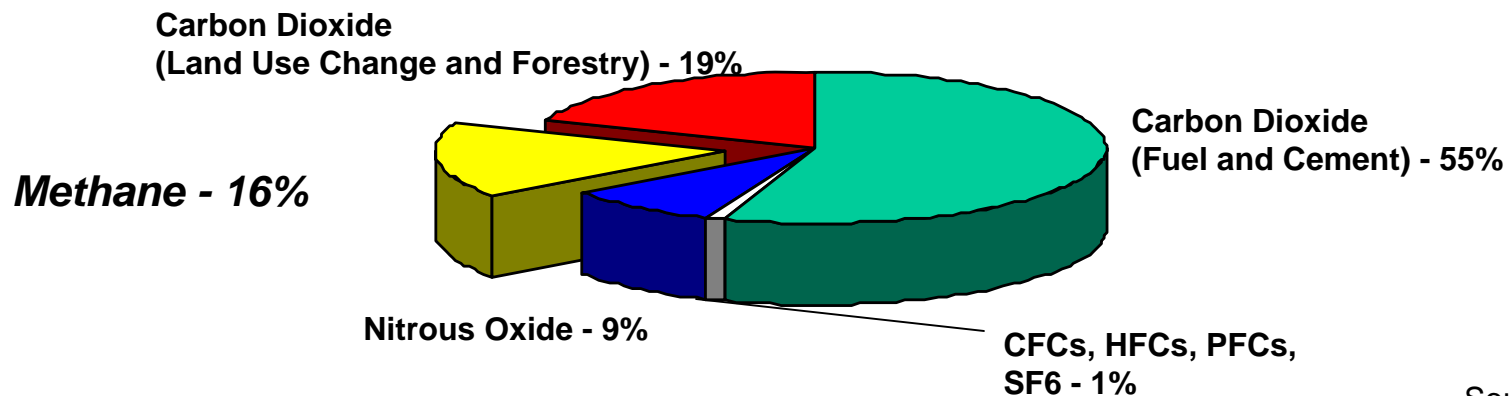


Methane to Markets

Why focus on Methane?

- ✓ A potent GHG (100-year GWP of 23; atmospheric lifetime of ~12 years)
- ✓ The 2nd most important GHG accounting for ~18% of total climate forcing
- ✓ A primary constituent of natural gas and a valuable, clean-burning energy source

Global Greenhouse Gas (GHG) Emissions in 2000 = 40,702 MtCO₂e



Source: US EPA



Methane to Markets

M2M Purpose and Goals

- ***International Framework*** -- to advance the recovery and use of methane as a valuable clean energy source
- ***Cost-effective and Near-term Focus*** – on facilitating methane recovery and use projects in developing countries and countries with economies in transition
- ***Private Sector Involvement*** – involve private companies, multilateral development banks and other relevant organizations in M2M implementation and activities through the project network
- ***Key Methane Sources*** -- Natural gas & oil; Coal mines; Landfills; (Agriculture under consideration)



Methane to Markets

Partner Countries

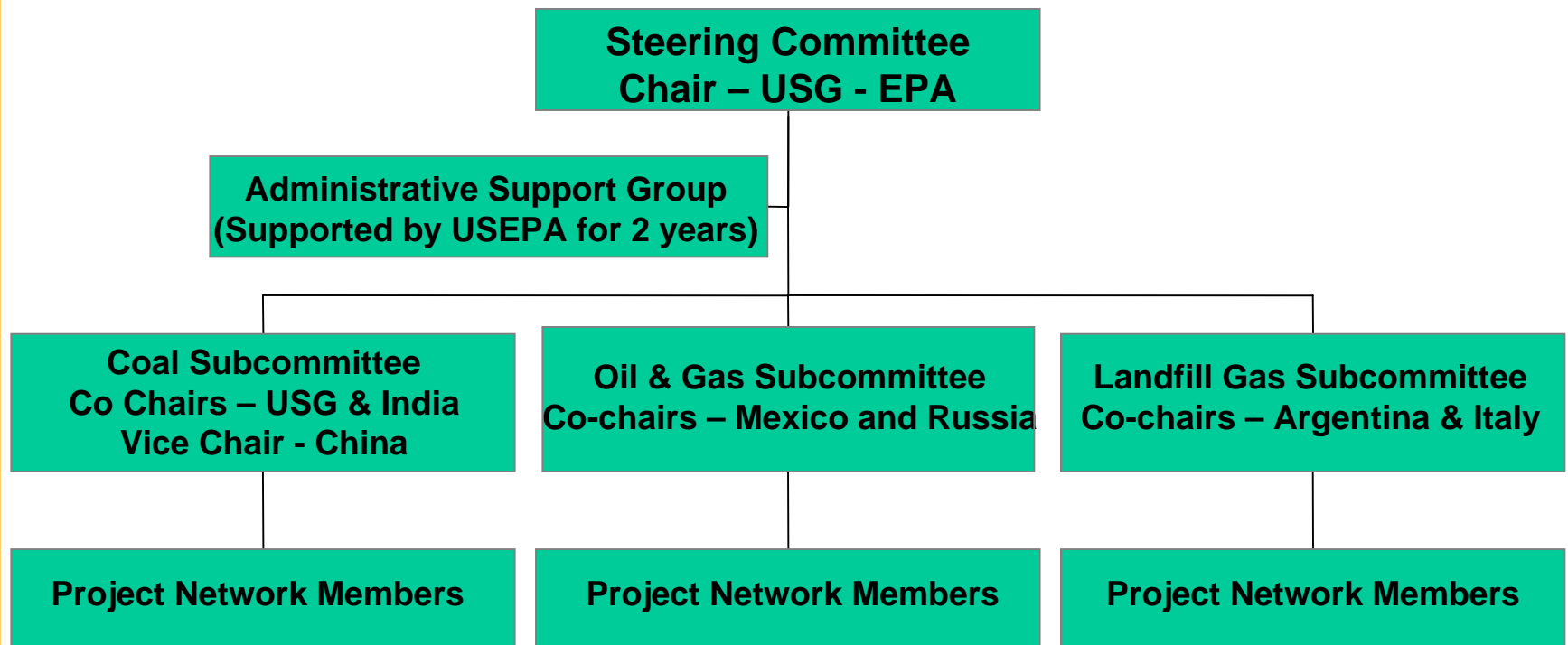
- Argentina
- Australia
- Brazil
- Canada*
- China
- Colombia
- India
- Italy
- Japan
- Mexico
- Nigeria
- Russia
- South Korea*
- Ukraine
- United Kingdom
- United States





Methane to Markets

Partnership Organization





Technical Subcommittees

- Report on progress to Steering Committee annually
- Develop a sector specific action plan within one year

Key Characteristics of Coal and Landfill Action Plans:

- Simple concrete actions to facilitate project development
- Activities address key barriers to project development
- Focused on near term activities
- Both identified project finance as a key issue



Methane to Markets

Project Network Members

- Project network members are private firms, development banks, NGOs or other governmental and non-governmental entities with an interest in methane recovery and use projects
- Currently over 150 organizations including:
 - World Bank
 - UN Economic Commission for Europe
 - Consultants and Project Developers
- Encourage all Partners to engage key private sector organizations in the Project Network
 - Organizations can join on-line at www.methanetomarkets.org
- Project Network organizations are listed on our website



Submit Ideas for Activities or Project

- Web based mechanism for subcommittees and other PN members to solicit and receive ideas for activities
 - Proposals sent to subcommittees and posted on the website
 - Creates partnerships to implement projects
 - Download submission forms at:
www.methanetomarkets.org/docs/project_proposal_mechanism.doc
- Steering Committee will review the mechanism and recommend changes at the November meeting



Administrative Support Group

- Facilitation and coordination
 - Facilitate communication among committees and project network members
 - Coordinate meetings
- Outreach and Communication
 - Assist subcommittees in recruiting Project Network members
- Website development and maintenance
- Meeting support



Methane to Markets

Website - www.methanetomarkets.org

- Re-designed website will launch in October
 - Comments and input from subcommittees is appreciated
- Current website includes
 - On-line project network sign up
 - Project idea exchange
 - List of Project Network members and contact information for Subcommittee members



Outreach and Communication

- Quarterly Update – *Methane International*
 - 2nd Issue will be out shortly after this meeting
- Printed outreach materials
 - Brochure
 - Fact sheet on the Partnership
 - Fact sheet on Methane
 - Fact sheet on the Project Network
 - Fact sheets on each sector
- Will be available on the web and ASG can supply Partners and Project Network members with printed materials



Methane to Markets

2nd Annual Methane to Markets Meeting

2-4 November, Buenos Aires, Argentina

- 2 Nov – Subcommittee meetings
 - Finalize and refine action plan
 - Develop any recommendations or suggestions for consideration by the Subcommittee

- 3 Nov – Plenary
 - Morning Plenary Session
 - Subcommittee Co-chairs will present and review year 1 progress to Steering Committee
 - Afternoon Session
 - Steering Committee meets to develop plans and charge to Subcommittees for year 2
 - Finance Workshop



Methane to Markets

2nd Annual Methane to Markets Meeting (con't)

- 4 Nov – Subcommittee meetings and closing
 - Steering Committee decisions reviewed
 - Subcommittees meet to discuss plans for year 2 of the Partnership
 - Decide on location for next subcommittee meeting



Methane to Markets

ASG Contact Information

Ms. Erin Birgfeld
Head, Administrative Support Group
Methane to Markets Partnership
Tel: +1.202.343.9079
email: asg@methanetomarkets.org
website: www.methanetomarkets.org