



Methane to Markets

Methane to Markets Partnership Overview

WIREC Official Side Event

March 4, 2008

**Dina Kruger, Director
Climate Change Division
U.S. Environmental Protection Agency**

Overview

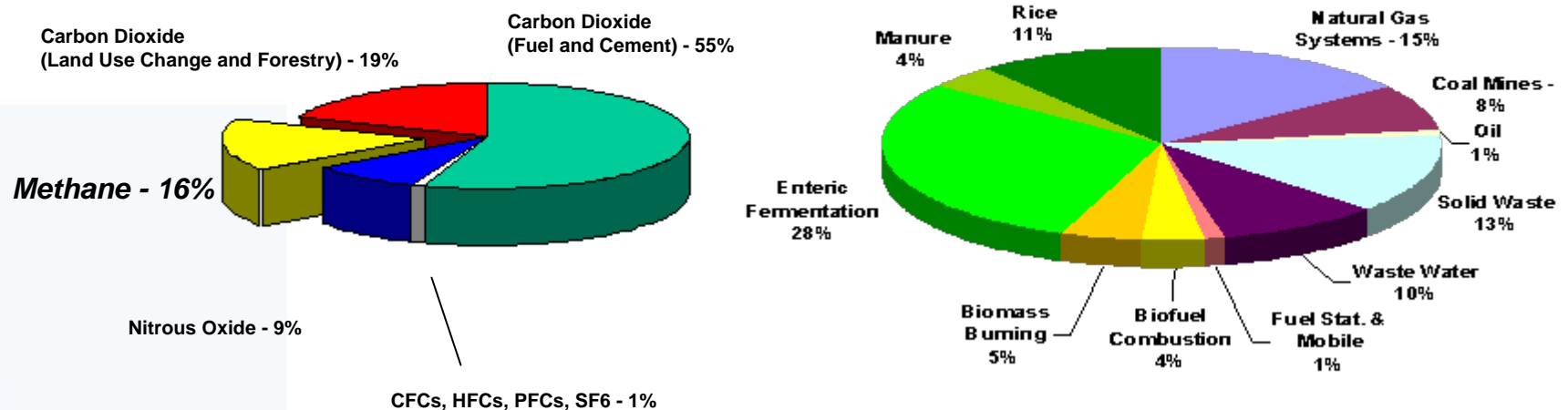
- Background
- Accomplishments
- Partnership Expo Beijing
- Looking Forward

Why focus on Methane?

- A potent greenhouse gas (GHG) with 100-year global warming potential of 21; atmospheric lifetime of ~12 years
- The 2nd most important GHG accounting for ~18% of total climate forcing
- A primary constituent of natural gas and a valuable, clean-burning energy source

Global GHG Emissions in 2000

40,702 million tonnes carbon dioxide equivalent (MtCO₂e)



Overview: Objectives and Benefits of the M2M Partnership

OBJECTIVES

- Advance the recovery and use of methane while:
 - Enhancing economic growth
 - Promoting energy security
 - Improving local air quality and public health.

BENEFITS

- Stabilization/Decline in Methane Concentrations will result in:
 - Sustainability
 - Energy security
 - Health and safety
 - Profitability

Methane to Markets Partnership

- Encourages development of **cost-effective** methane recovery and use opportunities in
 - coal mines
 - landfills
 - oil and gas systems and
 - agriculture (manure waste management)
- Private companies, multilateral development banks and other relevant organizations participate by joining the **Project Network – over 650 organizations now participating**
- Over 21 Partner Governments

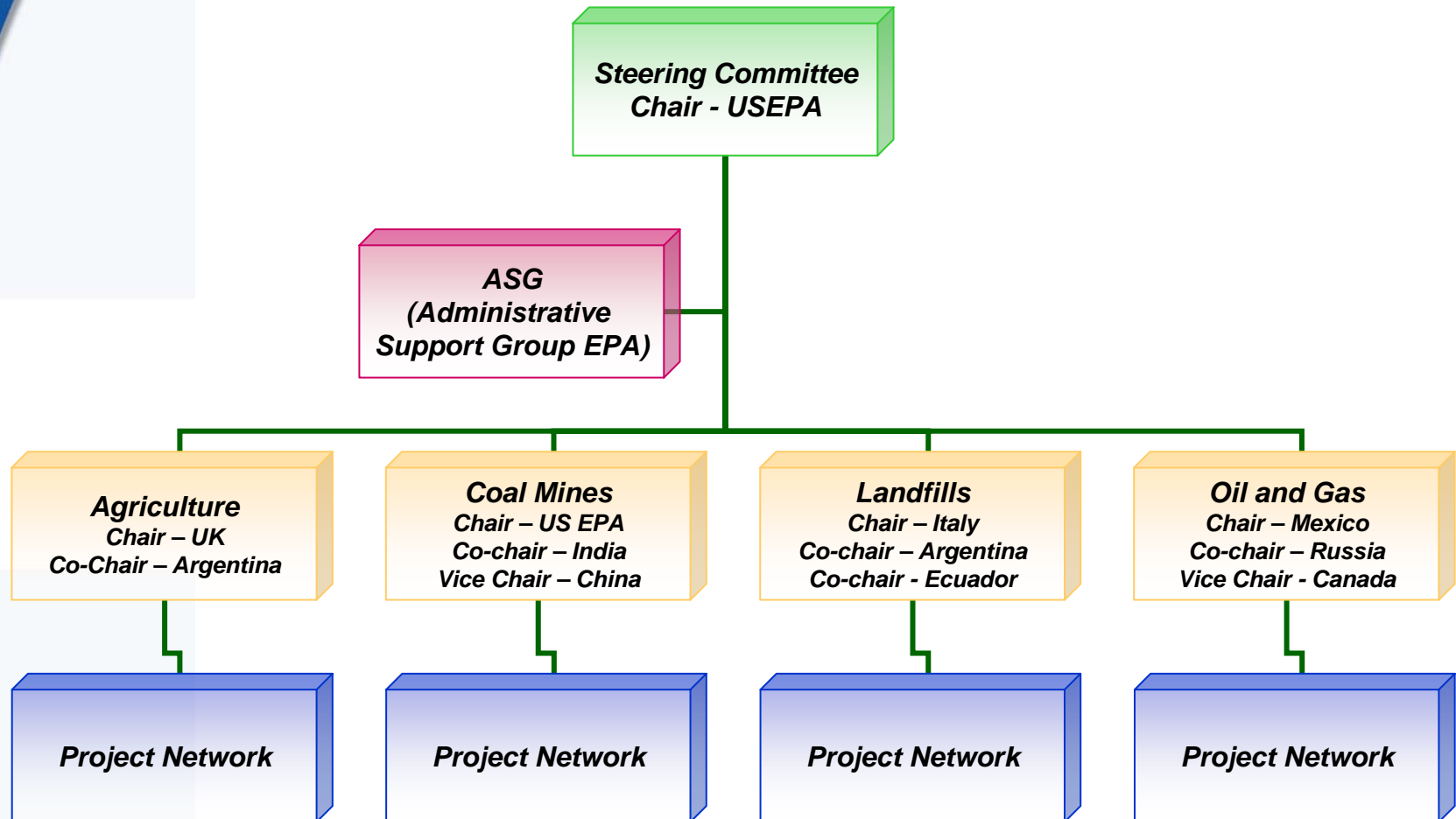
Argentina
Australia
Brazil
Canada
Colombia
China
European Comm.
Ecuador
Germany
India
Italy
Japan
Korea

Mexico
Mongolia*
Nigeria
Pakistan*
Philippines*
Poland
Russia
Thailand*
Ukraine
United Kingdom
United States
Vietnam



*New countries that have requested to join but are not yet partners

M2M Partnership Organization



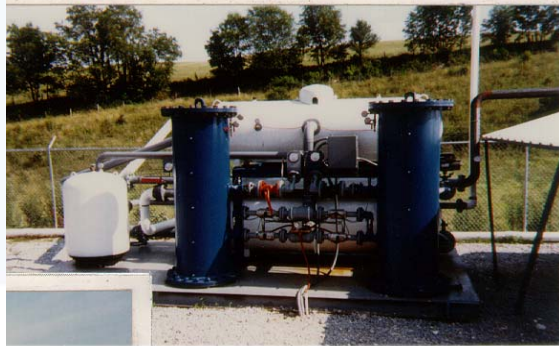
Methane to Markets: Accomplishments to Date

- International dialogue on methane recovery and use opportunities
- Developed sector action plans and have held multiple meetings of each sector subcommittee
- Initiated multiple projects and other activities in more than 12 Partner countries.
- More than 90 projects at the 2008 Beijing Expo!



Methane to Markets Focuses on Sectors with Near-Term Project Opportunities

Coal Mines



Oil and Gas Systems



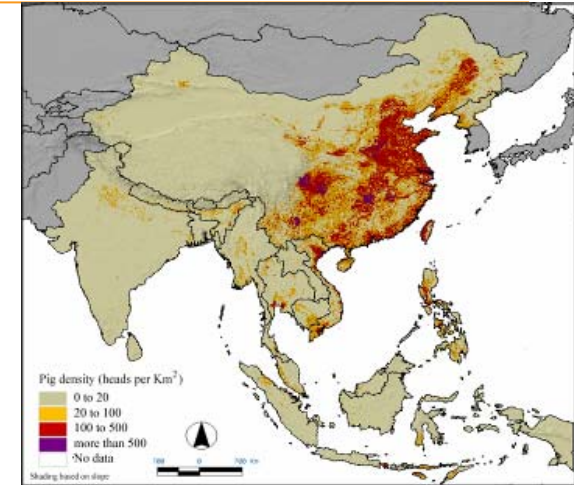
Landfills



Agricultural Waste

Agriculture Sector

- 15 countries are on the Subcommittee, led by chairs from Argentina and the United Kingdom
- A key area of focus for our newest Subcommittee is in increasing awareness of Anaerobic Digestion opportunities within Partner countries.
- One exciting project here is a World Bank initiated \$21 million 5-year *Pig Waste Management* project in Asia



Landfill Sector

- 18 countries are on the Subcommittee, led by chairs from Argentina, Ecuador, and Italy
- Developed and Launched International Landfill Database
- Developed a comprehensive international landfill gas resource guide
- Mexico's SEMARNAT, EPA and USAID worked together to complete LFG pre-feasibility studies and pump tests at landfills owned by the cities of Ensenada and Nuevo Laredo.
 - The tests indicate that the sites are good candidates for an energy project.



Partnership Expo: A Forum for Projects, Technology, Financing, and Policy



Beijing, China

30 October – 1
November 2007

- Over 750 attendees from 34 countries
- High level participation
 - Minister Xie Zhenhua, Vice Chairman of NDRC opened the meeting
 - Ambassador Randt, spoke on behalf of the U.S.
 - Vice President of ADB, Bindu Lohani gave keynote speech
- International Methane Marketplace
 - 91 projects showcased
 - 39 private sector companies showcased technologies and services
 - 13 country booths
- If fully implemented these projects are estimated to yield annual methane emission reductions of approximately 11.5 million metric tons of carbon dioxide equivalent by 2015
- See www.methanetomarket.org/expo for more information on projects and proceedings

Upcoming Meetings

- **Subcommittee Meetings**
 - Coal Sector, April 29th,– Sardinia
 - Ag Sector, April/May– Mexico
 - Oil & Gas Sector, May 20th,– Rome
 - Landfill Sector, June 16th,– Argentina

- **Steering Committee**
 - Mid-December

- **All meeting info will be posted on:**
www.methanetomarkets.org/events/index.htm

For More Information

- Web site
 - www.methanetomarkets.org

- Administrative Support Group
 - asg@methanetomarkets.org
 - Tel: +1.202.343.9683
 - Fax: +1.202.343.2202

- Direct Contact information for ASG leads:
 - Ferland.Henry@epa.gov Birgfeld.Erin@epa.gov
Tel: +1-202-343-9330 +1-202-343-9079