

Thailand Country Update (Agriculture Segment)

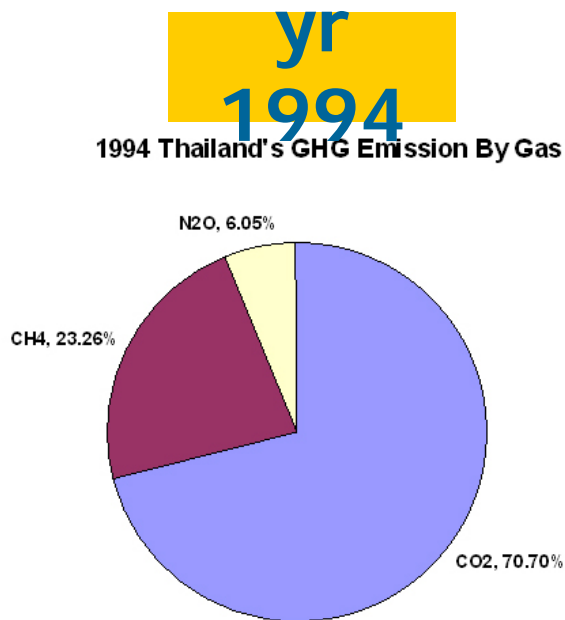
Dr Arux Chaiyakul

Department of Livestock Development
Ministry of Agriculture and Cooperatives
Kingdom of Thailand

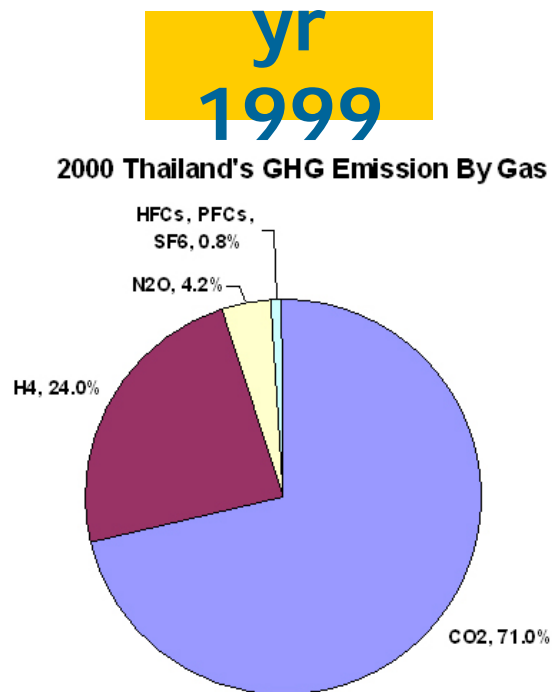
Outline

- GHG Emission situation in Thailand
- GHG emission from Agriculture Sector
- CDM project approved by TGO
- Registered CDM project by CDM EB
- Thailand GHG emission reduction from livestock production
- GHG emission reduction from M2M project
- CDP systems in M2M project

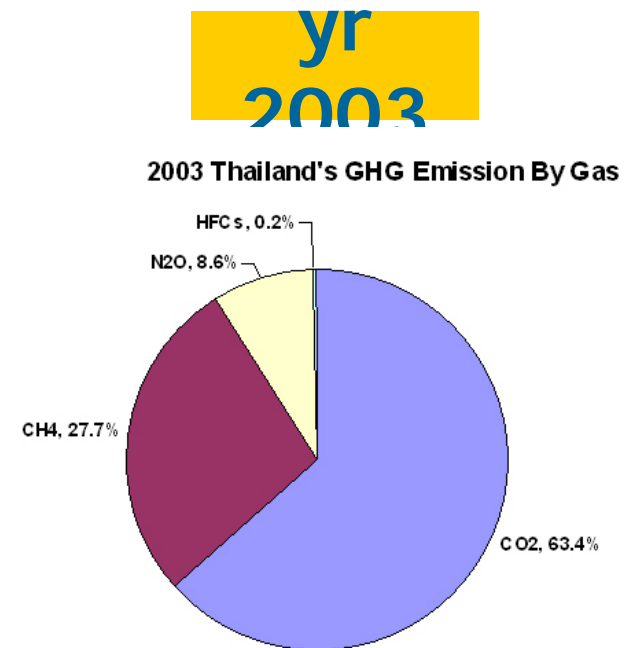
GHG emission in Thailand 20% increased during 1994 – 2003



ที่มา: กระทรวงทรัพยากรธรรมชาติและสิ่งแวดล้อม (พ.ศ. 2543)



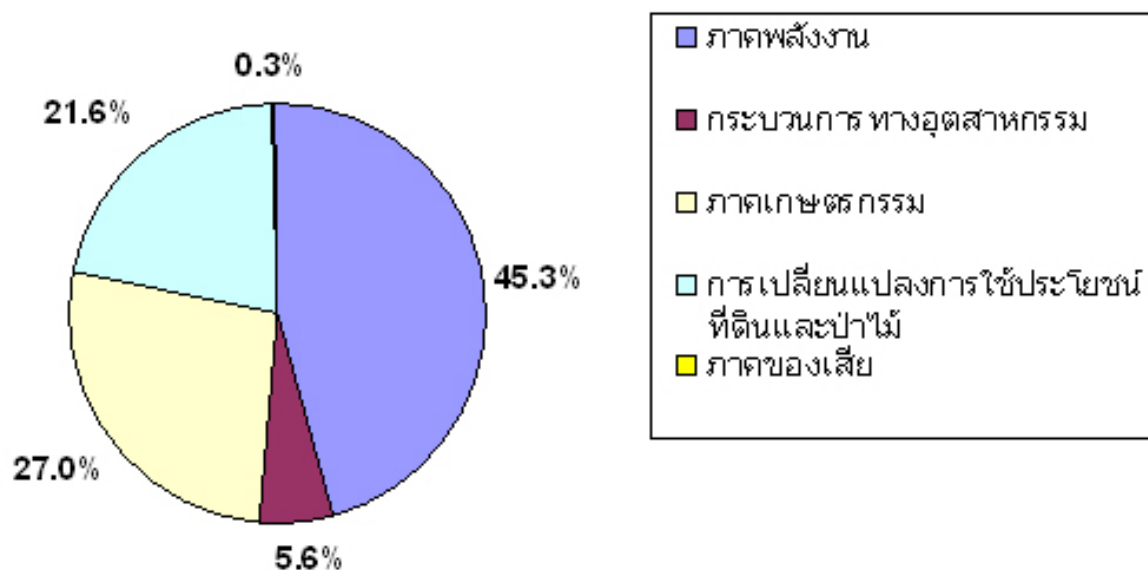
ที่มา: World Resource Institute, 2000



ที่มา: บริษัท อีอาร์เอ็ม-สยาม จำกัด (พ.ศ. 2548)

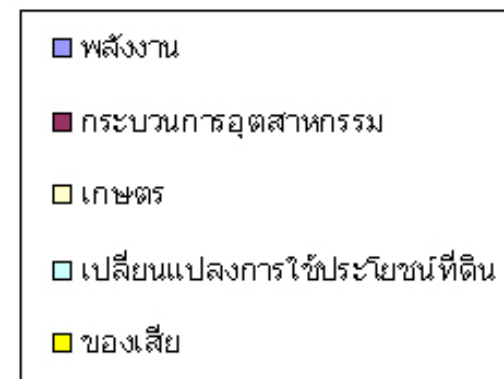
Energy sector is the most part of GHG emission 56% and 24% from agriculture

1994 Thailand's GHG Emission By Sector
(CO₂, CH₄, N₂O)



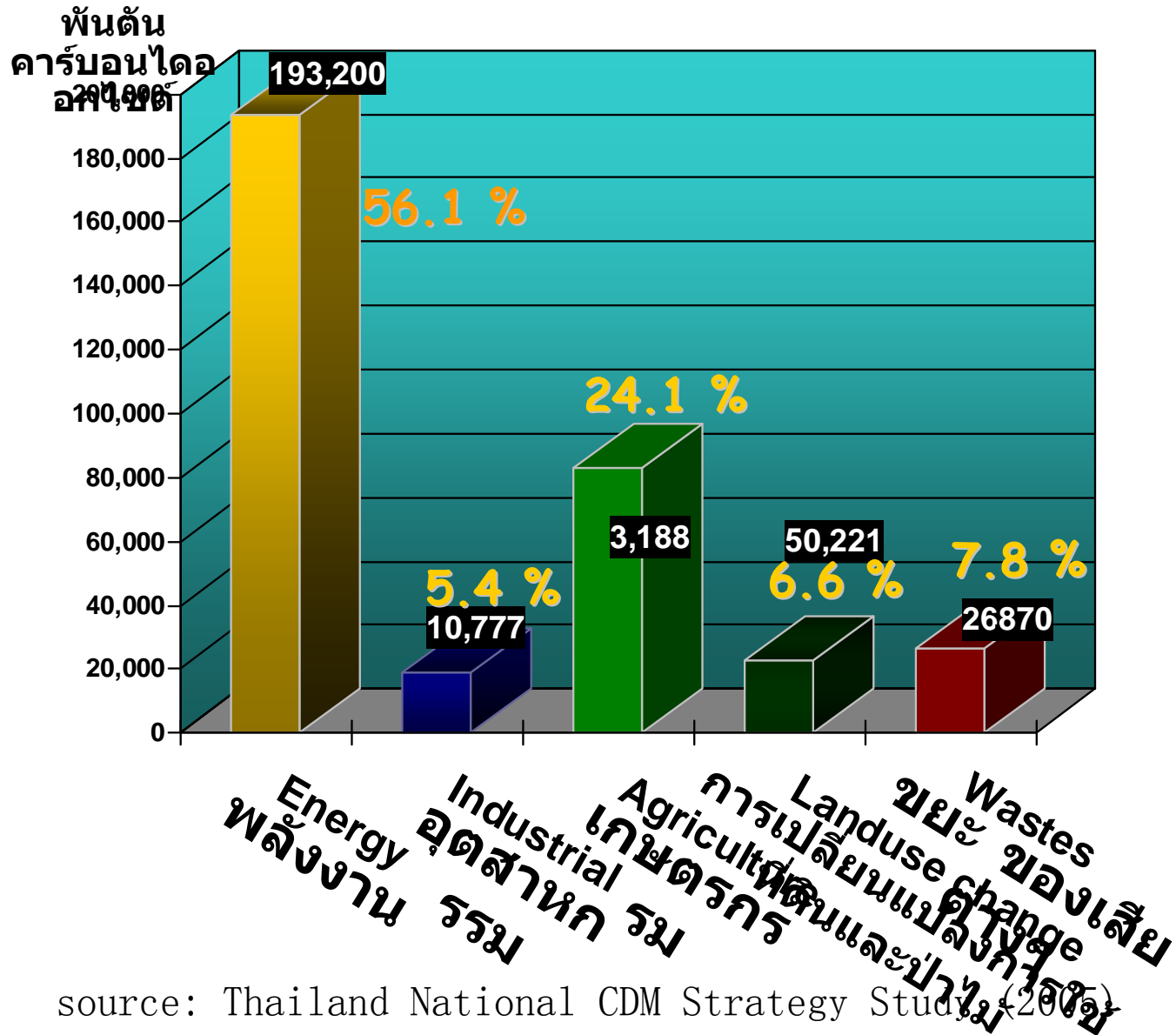
ที่มา: กระทรวงทรัพยากรธรรมชาติและสิ่งแวดล้อม (พ.ศ. 2543)

Emission By Sector
(CO₂, HFCs)

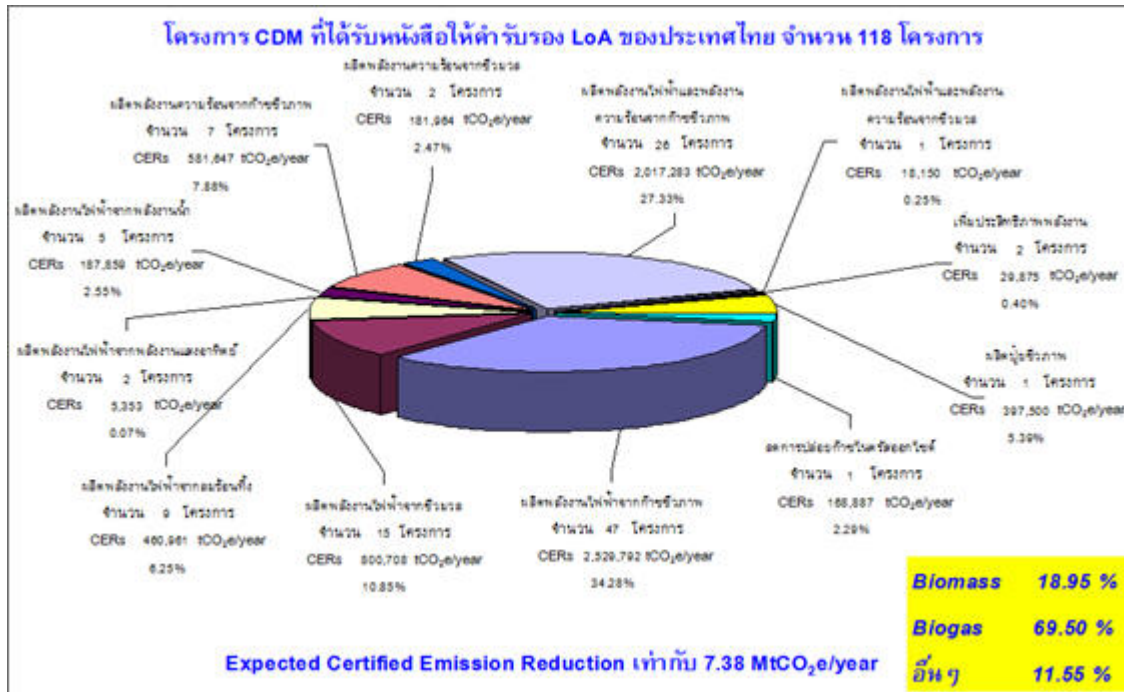


ที่มา: บริษัท อีอาร์เอ็ม-สยาม จำกัด (พ.ศ. 2548)

GHG Emission in 2003



Approval CDM Project by Thailand DNA



Total CDM projects with Thailand DNA Approval (Thailand Greenhouse Gas Management Organization) = **118** Projects

Total Emission = **7.38** Million Ton CO₂ e per Year

Biogas Project 69.5%
Biomass Project 18.95%
Others 11.55%

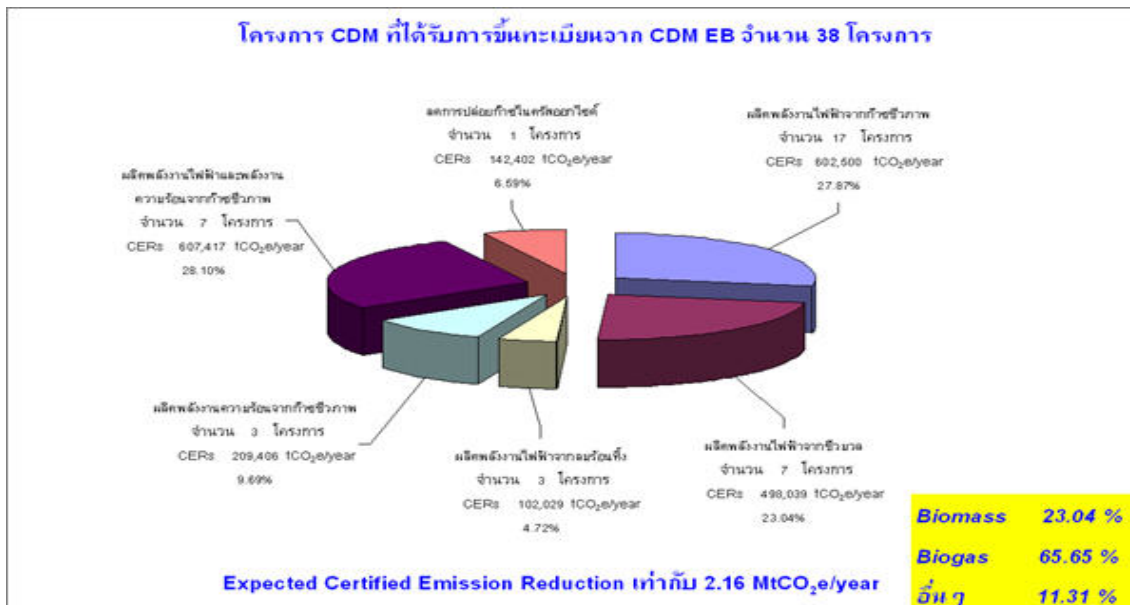
Source : TGO , 13 October 2010

Registered Projects with CDM EB

Project Registered with CDM Executive Board = **38** Projects

Total Emission Reduction = **2.16** Million Ton CO₂ e per Year

Biogas Project 65.65%
Biomass Project 23.04%
Others 11.31%



Source : TGO , 13 October 2010

Thailand GHG Emission Reduction from Livestock Production

- Planned Total Methane Emission Reduction from **Swine Waste** Equal to

700,000 ton CO₂e/year

Expected to complete during 2011-2012

- Project on progress for Methane Emission reduction from **Swine Waste** Equal to

500,000 ton CO₂e/year

As estimated by January 2010

Thailand GHG Emission Reduction from Chicken Production

- New Project for Methane Emission Reduction from **Chicken Waste** started from Sep 2010
- Target to cover 5 Million chicken (from 280 M)
- GHG emission reduction will be Equal to
65,000 ton CO₂e/year

Project supported by Energy Preservation Fund



GHG Emission Reduction from DLD Project

- Planned Total Methane Emission Reduction from Swine Waste Equal to

120,000 ton CO₂e/year

Project expected to complete during 2011

- Finished Project for Methane Emission reduction from Swine Waste Equal to

60,000 ton CO₂e/year

As estimated by November 2010

DG visits farm in M2M project



Director of BLSC report to DG



Safety first



Housing



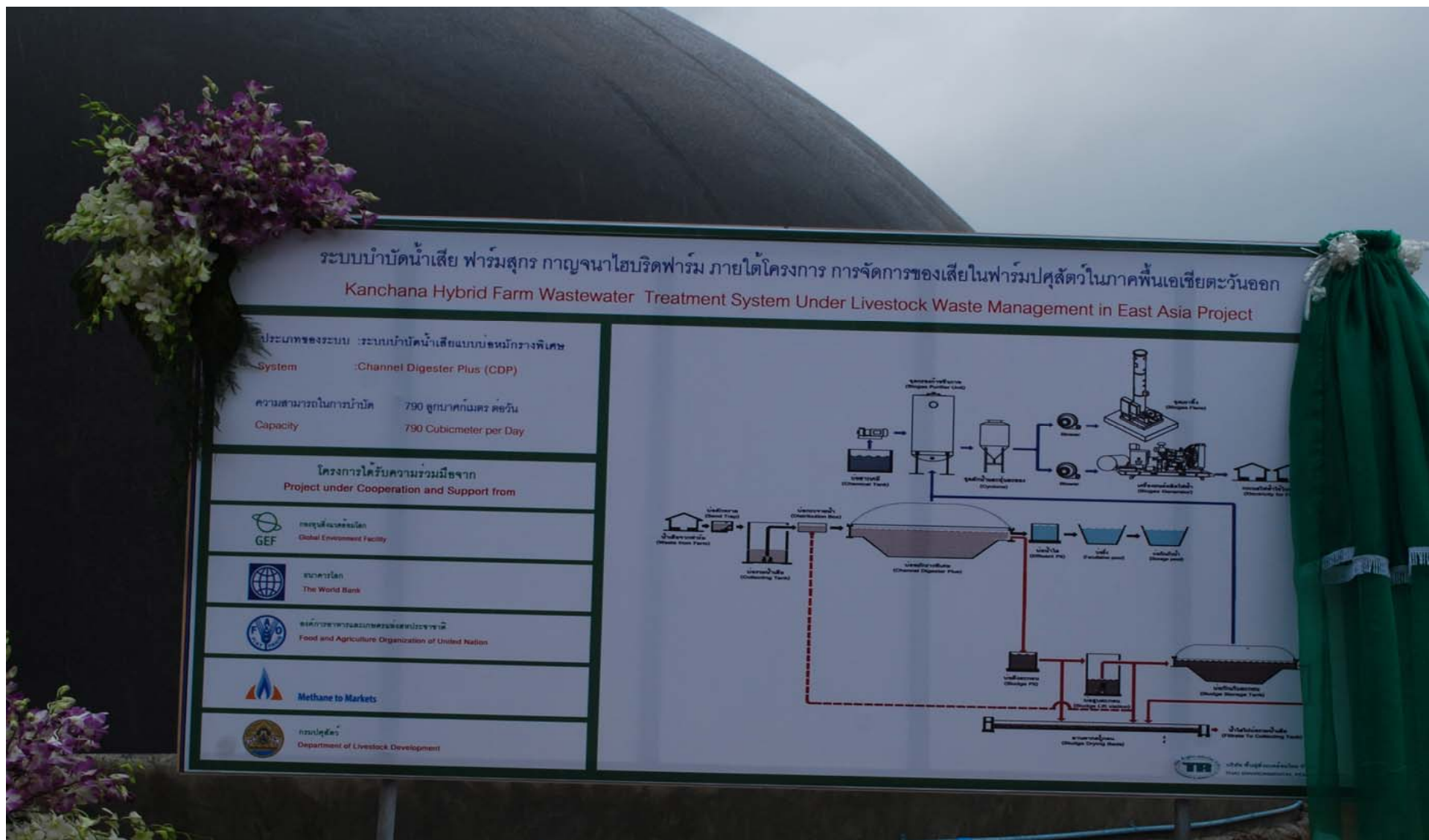
Housing



CDP system opening



CDP system opening



Channel Digester Plus system



Gas Purifier Unit



Control room



Sludge withdrawer



Sludge drying bed



Sludge drying bed



Flare



Flare



Gas engine control system



Recorder



Recorder



DG with news reporter



DG gives a news to reporter



Thanks from farmer



Thanks from district officer



GHG Emission Reduction Supported by M2M

- Finished project supported by M2M from year 2008 to 2010 to treat waste for 180,000 pigs
- GHG emission reduction equal to **60,000** ton CO₂e/year



Thank You!