

Global Methane Initiative Administrative Support Group – Overview

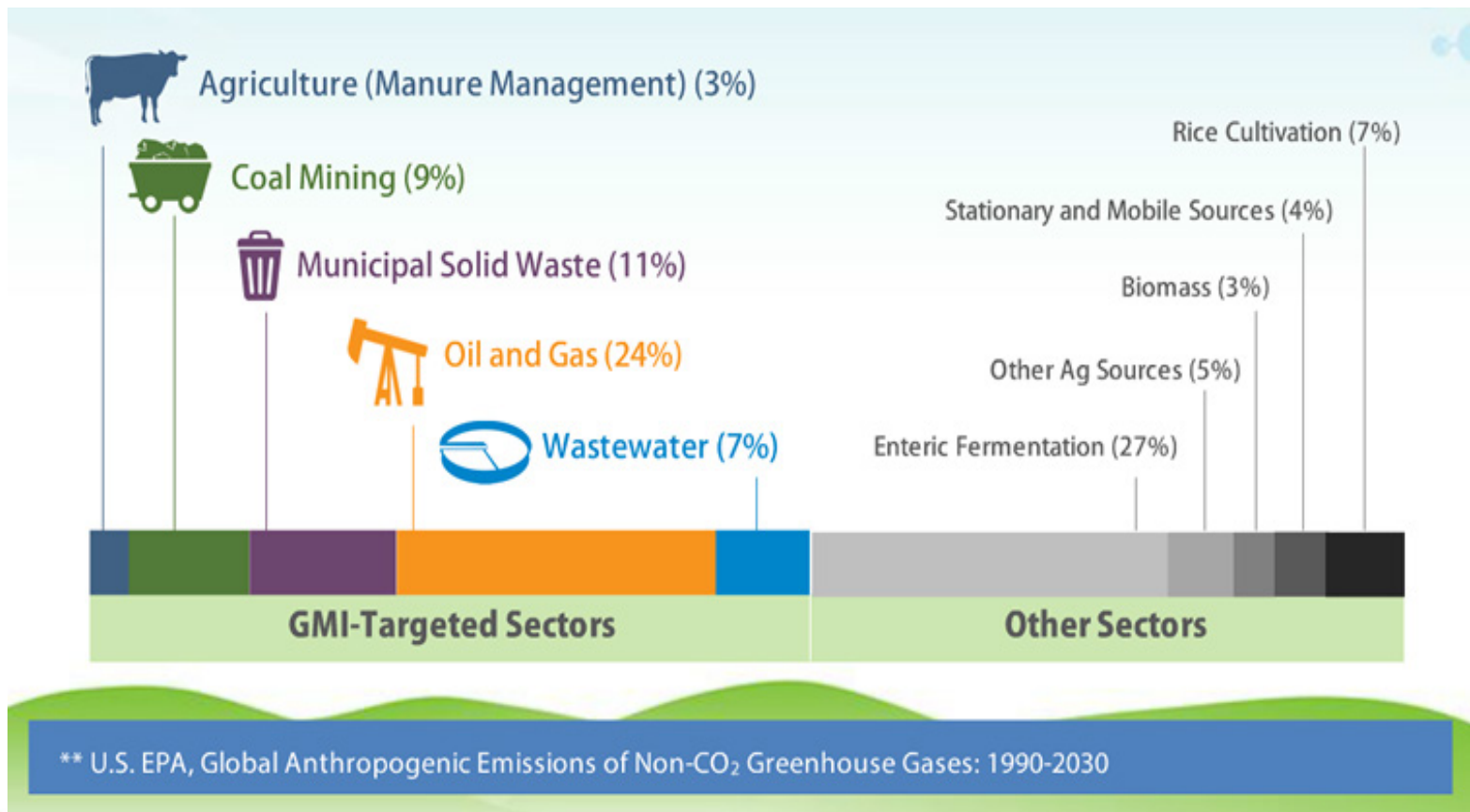
Monica Shimamura, ASG

Overview

GMI is a voluntary, multilateral partnership that aims to reduce methane emissions and to advance the abatement, recovery, and use of methane as a clean energy source.

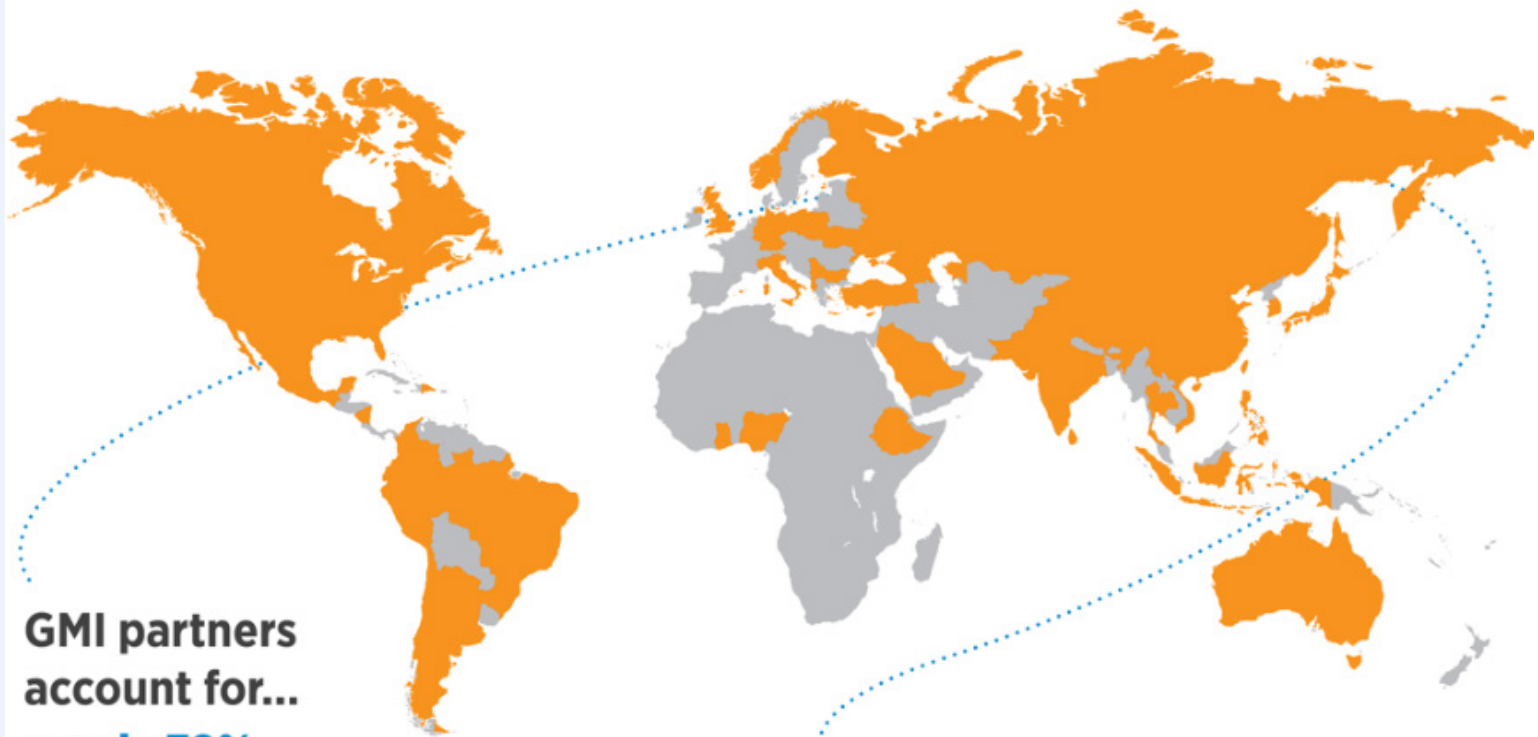
Targeted Sectors

GMI-targeted sectors contribute more than half of total global methane emissions.



Global Methane Initiative

GMI reduces global methane emissions and encourages recovery and use of methane as an energy source.



**GMI partners
account for...**
nearly 70%
of total global
manmade CH₄
emissions

**...which is equivalent to
approximately 5,000 MMTCO₂E**

Strategies for Success

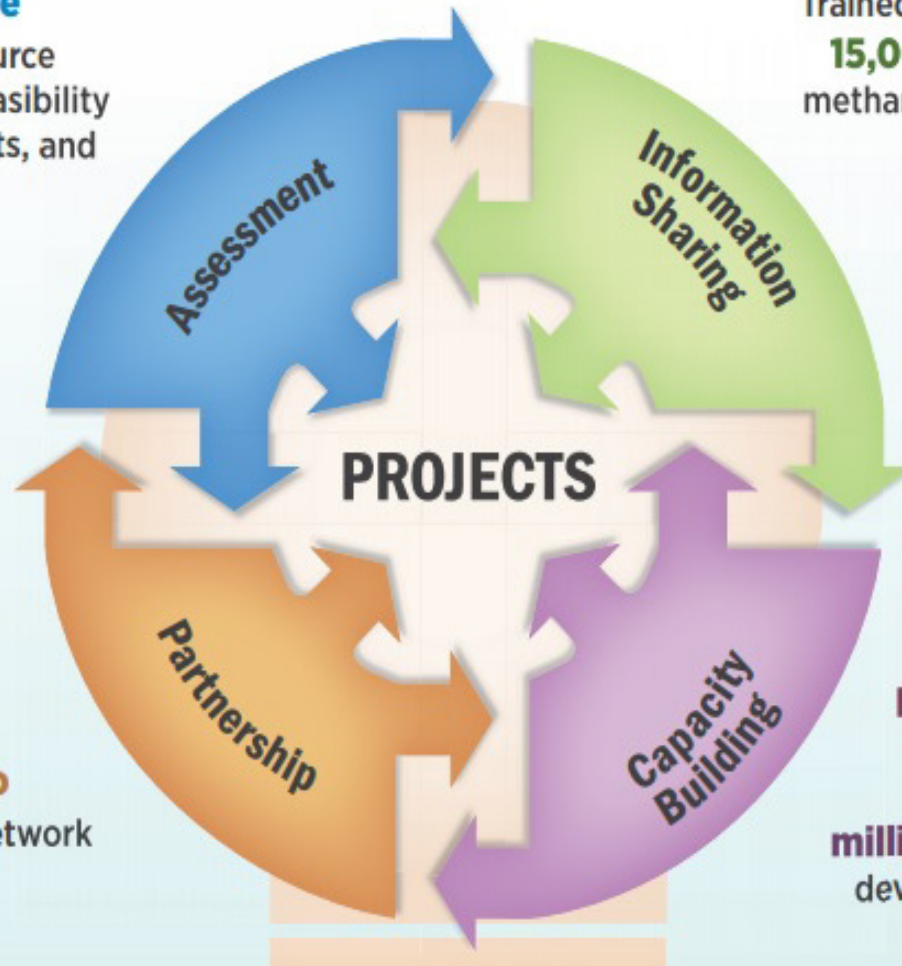
- Promote international cooperation on methane reduction
- Provide reliable methane emission data
- Support capacity building in partner countries
- Assist in the removal of barriers for methane project development
- Identify cost-effective opportunities for methane projects
- GMI activities support data collection and feasibility studies, etc. to build a “pipeline of projects” and other capacity building efforts – not direct project investment



Activities

Conducted **more than 600** resource assessments, feasibility studies, site visits, and study tours

Trained **more than 15,000** people in methane mitigation techniques

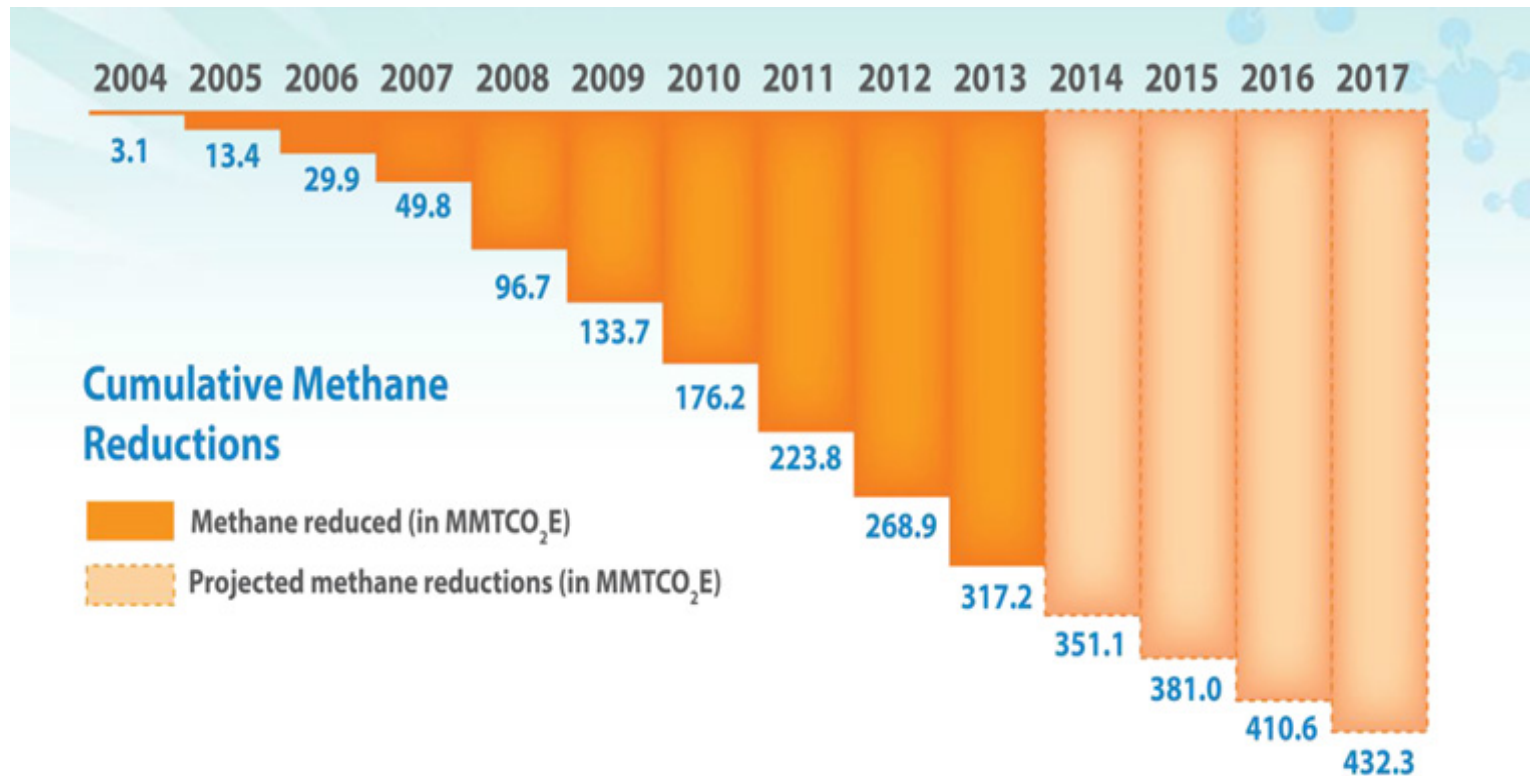


Grown **from 14 to 42** Partner Countries (plus the European Commission), and **from 100 to 1,300** Project Network members

Developed more than **50 tools and publications**, and leveraged nearly **\$550 million** for project development and training

Accomplishments

By 2017, GMI-supported projects are projected to yield cumulative methane emission reductions of more than 430 MMTCO₂E.

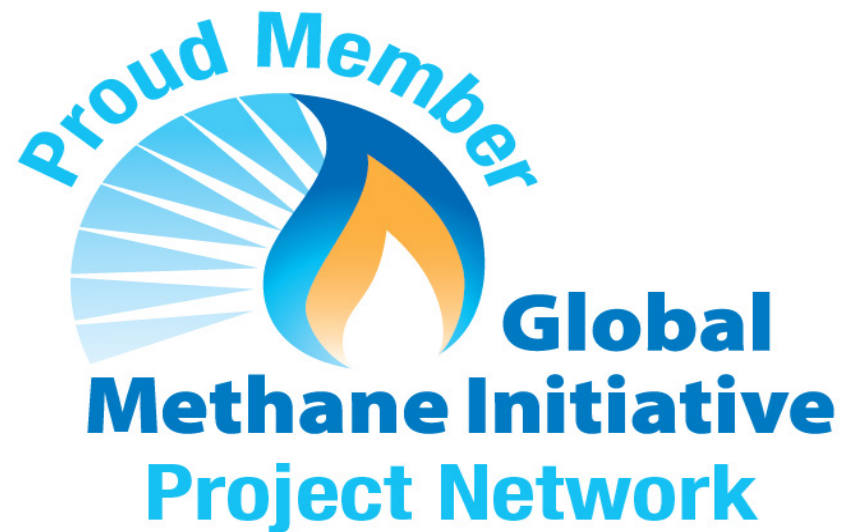


Organization

- **Steering Committee**
 - Co-chaired by Canada and Mexico
- **Administrative Support Group (ASG)**
- **Subcommittees**
 - Biogas (Agriculture, MSW, Wastewater sectors)
 - Coal Mines
 - Oil and Gas
- **Project Network**

GMI Project Network

- Brings necessary actors from the private sector, NGOs, and multilateral investment organizations (World Bank, Asian Development Bank, etc.) together to implement reduction projects.
- More than 1,000 diverse
- Project Network members can:
 - Expand business and increase profits
 - Distinguish themselves in the marketplace
 - Identify financial and technical support for potential projects
 - Build capacity
 - Fulfill goals
 - Mitigate climate change



Oil and Gas Subcommittee - Statement of Purpose

The **Oil & Gas Subcommittee** is committed to reducing the impacts of climate change by providing international leadership to mitigate global methane emissions through the abatement, recovery and use of methane from oil and gas operations as a clean energy source.

The Oil & Gas Subcommittee encourages collaboration between delegates from Partner Countries and Project Network members to build capacity, develop strategies and markets and remove technical and non-technical barriers to methane mitigation project development in order to increase environmental quality, improve operational efficiency and strengthen the economy, from the additional gas brought to market.

Oil and Gas Subcommittee - Structure

- Chairs/Co-Chairs (up to 3)
 - Lead strategic vision
 - Nominated by Partner Country
 - Two year term (can be extended by subcommittee)
- Subcommittee Membership
 - Open to any and all Partner Country Delegates and Project Network members as well as collaborating organization representatives
- Collectively, through **consensus** they:
 - Set a robust management structure
 - Provide institutional leadership and consistency
 - Engage the Project Network members
 - Maintain an open and welcoming forum

Oil and Gas Subcommittee – Key Activities

- **The oil & gas subcommittee focuses on reducing or eliminating the fugitive emissions from the oil and natural gas systems, from “well head to burner tip.”**
- **The Subcommittee has:**
 - Hosted meetings and workshops in nearly 20 countries;
 - Completed country-specific action plans for ten Partners;
 - Showcased several project opportunities, success stories, and technologies developments at the GMI Expos and Partnership-wide events;
 - Developed numerous technical resources and tools;
 - Conducted methane measurement studies in Partner Countries.

GMI News

- Canada and Mexico are new Steering Committee Co-Chairs
- United States has formally stepped down; however, will continue to maintain Secretariat
- October 2017: In conjunction with UNECE, GMI will be hosting Coal Subcommittee Meeting
- GMI and CCAC working together to potentially develop another combined/partnership-wide meeting in 2018

For More Information

- GMI maintains an extensive website at:
www.globalmethane.org
- ASG Director:
 - Monica Shimamura
Phone: (202) 343-9337
Email: asg@globalmethane.org

Questions?

Contact Information:

Monica Shimamura

Director, Administrative Support Group

Global Methane Initiative

asg@globalmethane.org